



Support those who care for us

Providing support for community service nurses during community service placement will enhance their clinical competence.

Dr Kholofelo Matlhaba is a senior lecturer for health sciences education at the Department of Health Studies, University of South Africa.

ORCID ID:

0000-0002-3564-7344

[http://www.scielo.org.za/scielo.php?script=sci_arttext&pid=52078-51272020000400008;](http://www.scielo.org.za/scielo.php?script=sci_arttext&pid=52078-51272020000400008)

<https://https://hsag.co.za/index.php/hsag/article/view/1688> [www.researchgate.net/publication/336701028_Community_service_nurses_experiences_regarding_their_clinical_competence;](http://www.researchgate.net/publication/336701028_Community_service_nurses_experiences_regarding_their_clinical_competence)

[https://www.researchgate.net/publication/356204344_Validation_of_a_clinical_competence_evaluation_tool_for_community_service_nurses_in_North_West_province_South_Africa;](https://www.researchgate.net/publication/356204344_Validation_of_a_clinical_competence_evaluation_tool_for_community_service_nurses_in_North_West_province_South_Africa)

Community service nurses need support to ease their transition into the profession.

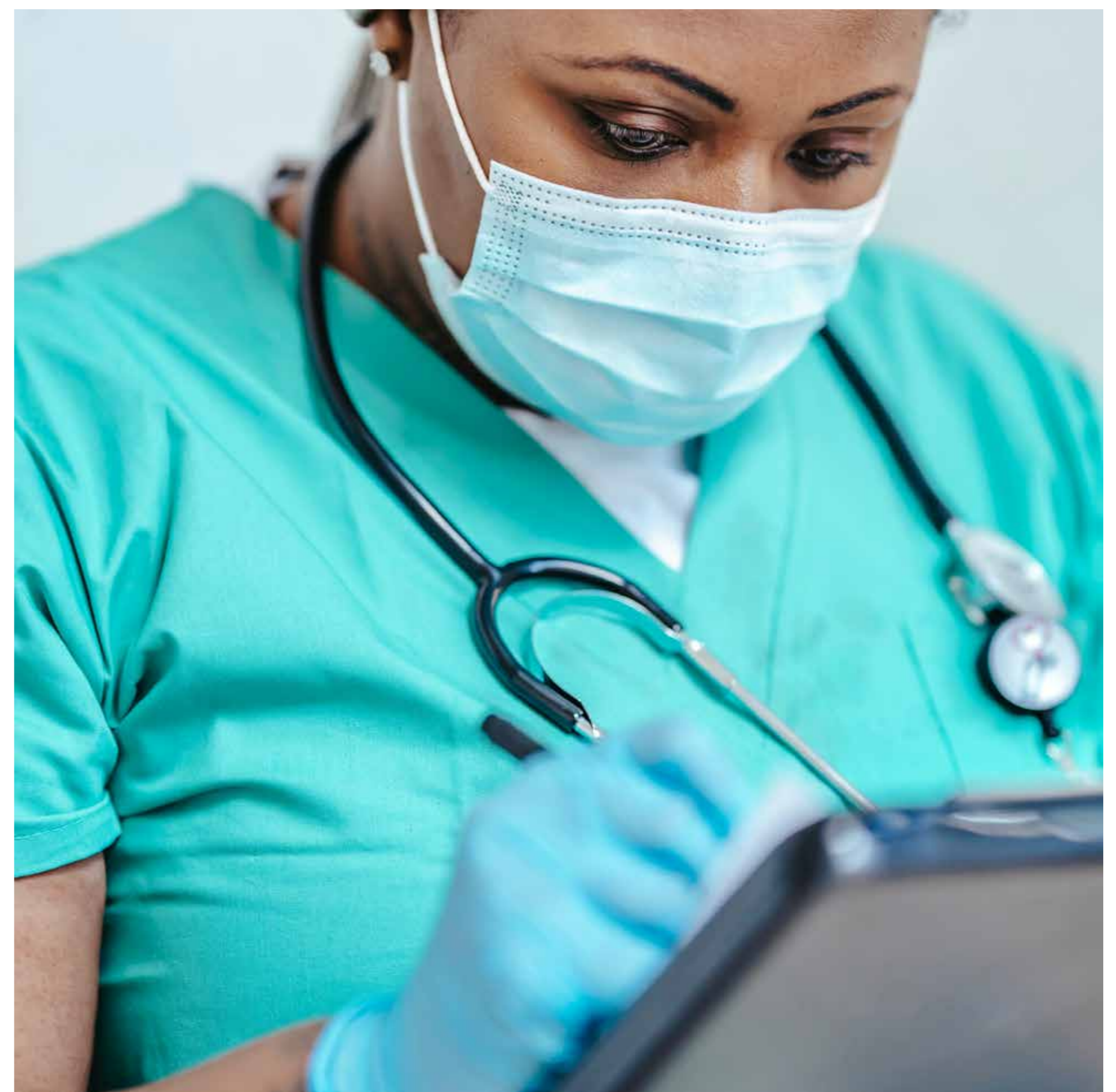
Transitioning from being a student nurse to a professional nurse can be tough. During community service, new qualified nurses find themselves working without supervision or mentorship and are suddenly expected to function fully as professional nurses.

They further face challenges such as little or no human resources support, and shortages of equipment such as medication or bed linen. They also find that there is a disconnect between what they have learned during training and what is happening in real-life situations.

“There is a need to strengthen the collaboration between nursing education institutions and healthcare facilities in terms of clinical placement, clinical accompaniment during training to ensure that students get enough exposure during their clinical learning, and furthermore, sufficient supervision during community service” says Kholofelo Matlhaba.

Healthcare facilities need to pay attention to shortages of human and material resources and offer support during the transitioning period or the 12 months of community service for nurses.

The recent COVID-19 pandemic has highlighted the important role



Supporting new qualified nurses will create caring, professional staff.

nurses play in a functional health-care system. South Africa, like many other countries, faces a critical shortage of nurses. Improving the support systems for new qualified nurses is important to increase the number of adequately trained nurses available to best serve the public.

“By supporting new qualified nurses, we will have competent

and independent practitioners who are ready to serve the community, as well as minimising unnecessary litigations. If this is not done, there will be more complaints from the patients as quality patient care will be compromised or it will result in a high rate of new nurses leaving the profession due to frustrations.”